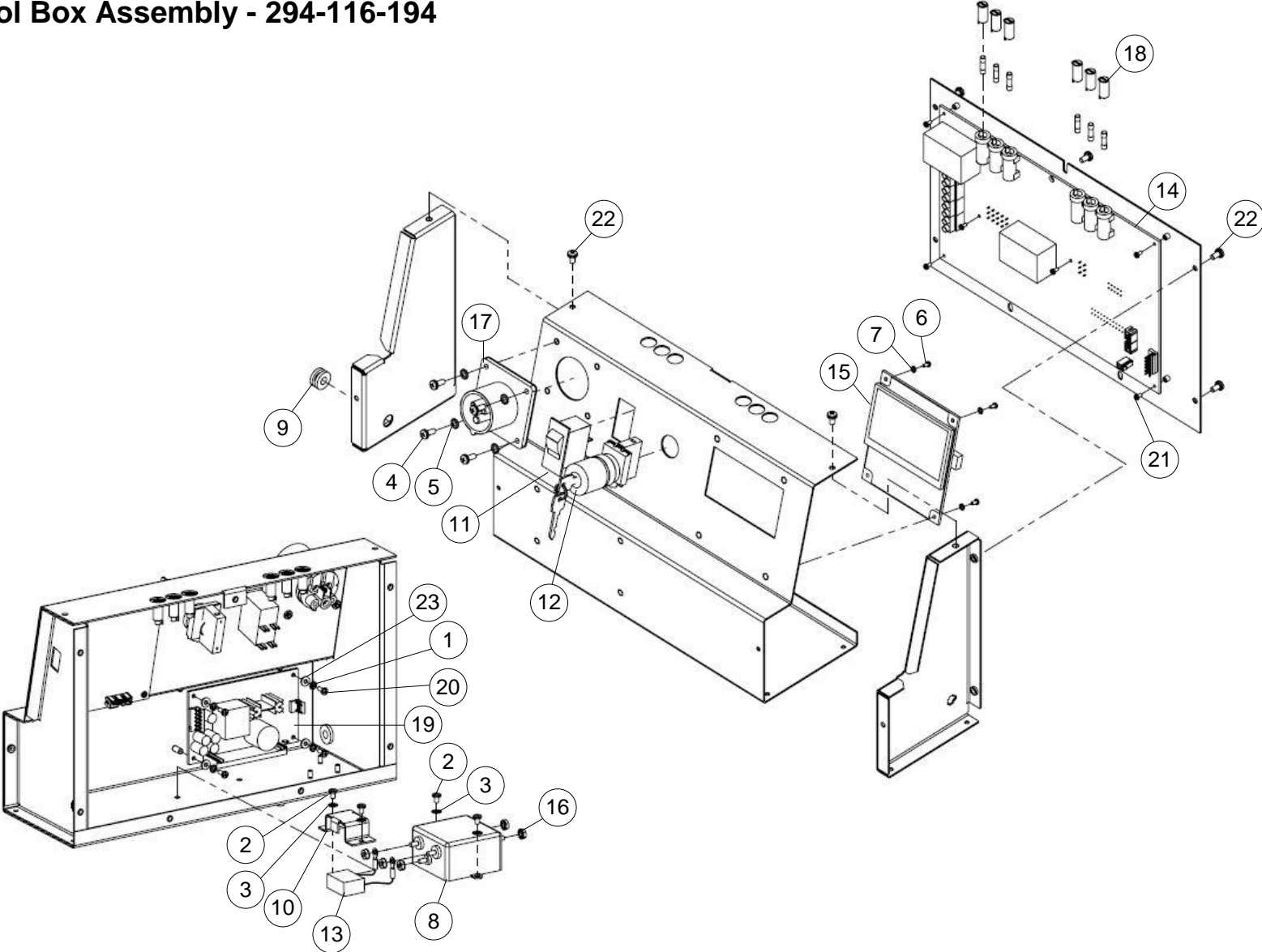


**110V Control Box Assembly - 294-116-195**  
**220V Control Box Assembly - 294-116-194**



	NUMBER	DESCRIPTION
1	01-005	WASHER, EXT TOOTH LOCK, #6
2	01-008	SCREW, PAN HEAD, 8-32 X 1/4
3	01-016	WASHER, EXT TOOTH LOCK, #8
4	01-021	SCREW, PAN HEAD, 10-32 X 1/2
5	01-033	WASHER, EXT TOOTH LOCK, #10
6	01-135	SCREW, PAN HEAD, 4-40 X 1/4
7	01-402	WASHER, EXT TOOTH LOCK, #4
8	02-040	RFI POWER LINE FILTER
9	04-078	GROMMET, 5/16 X 3/4 X 1/8, RUBBER
10	294-002-150	CAPACITOR BRACKET
11	743-504-010 294-002-214	CIRCUIT BREAKER, 110V 20 AMP CIRCUIT BREAKER, 220V 14 AMP
12	294-115-678	LOCKING E-STOP ASM

	NUMBER	DESCRIPTION
13	294-116-144	CAPACITOR ASM
14	294-116-181	RELAY BOARD ASM
15	294-116-183	DISPLAY BOARD ASM
16	7038-000832-000	NUT, KEPS, 8-32
17	746-023-450	POWER INLET
18	748-730-003	FUSE CAP
19	770-046-257	POWER SUPPLY, 45 WATT
20	813-227-062	SCREW, PAN HEAD, 6-32 X 3/8
21	818-221-042	SCREW, PAN HEAD, 4-40 X 1/4
22	818-240-062	SCREW, PAN HEAD, 10-32 X 3/8
23	948-631-062	WASHER, FLAT, #6

## Replacement Fuses

Voltage	110 V		220V	
	Current, A	Part Number	Current, A	Part Number
Cleaner Pump	2	748-510-600	1	748-901-111
Buffer Motor	10	748-510-400	5	748-511-405
Vacuum Motor	10	748-510-400	5	748-511-405
Drive Motor	6.25	748-512-110	4	748-510-100
Buffer Solenoids	8	748-901-031	4	748-510-100
Vacuum Head Solenoid	8	748-901-031	4	748-510-100