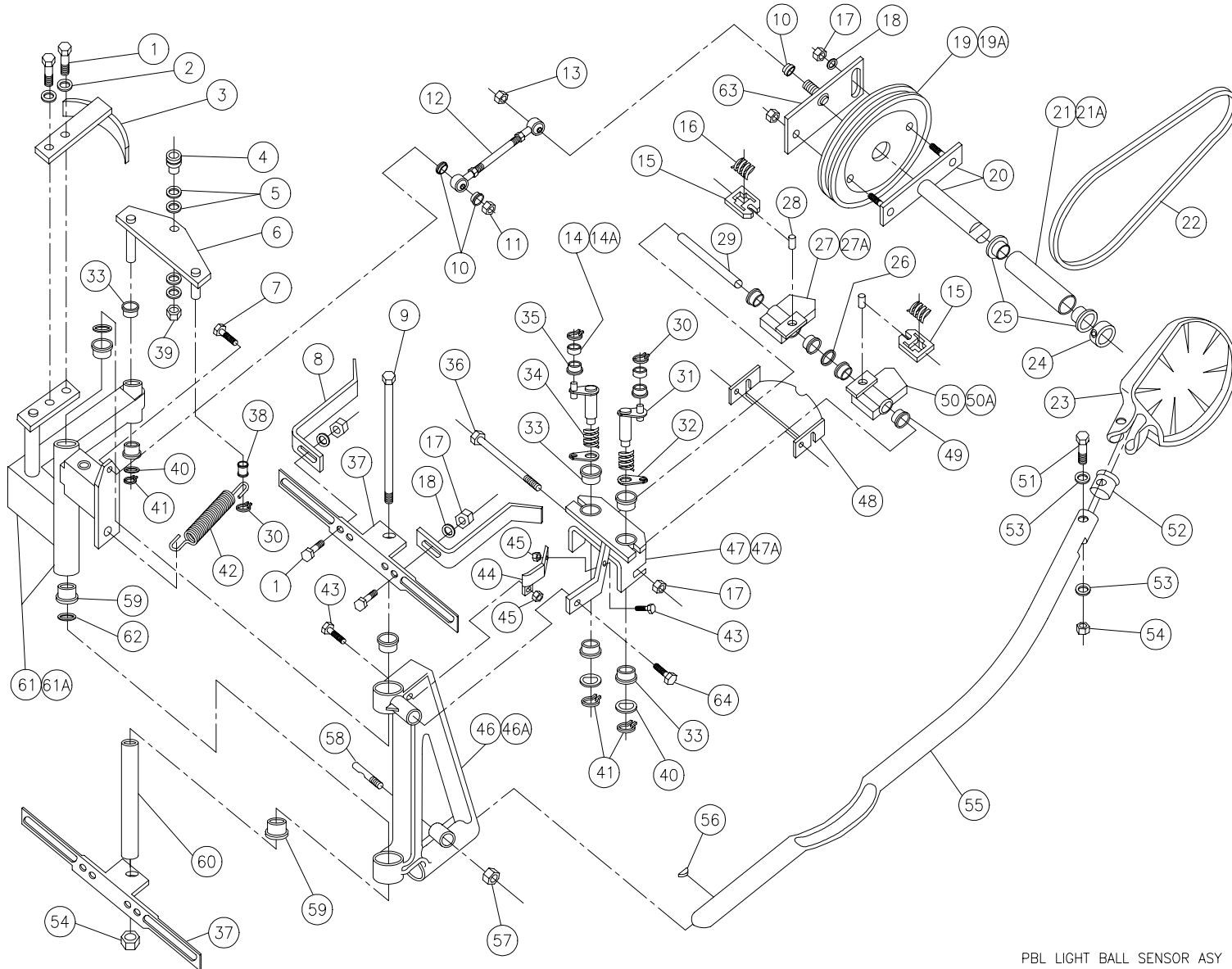


PBL LIGHT BALL SENSOR ASSEMBLY



PBL LIGHT BALL SENSOR ASY

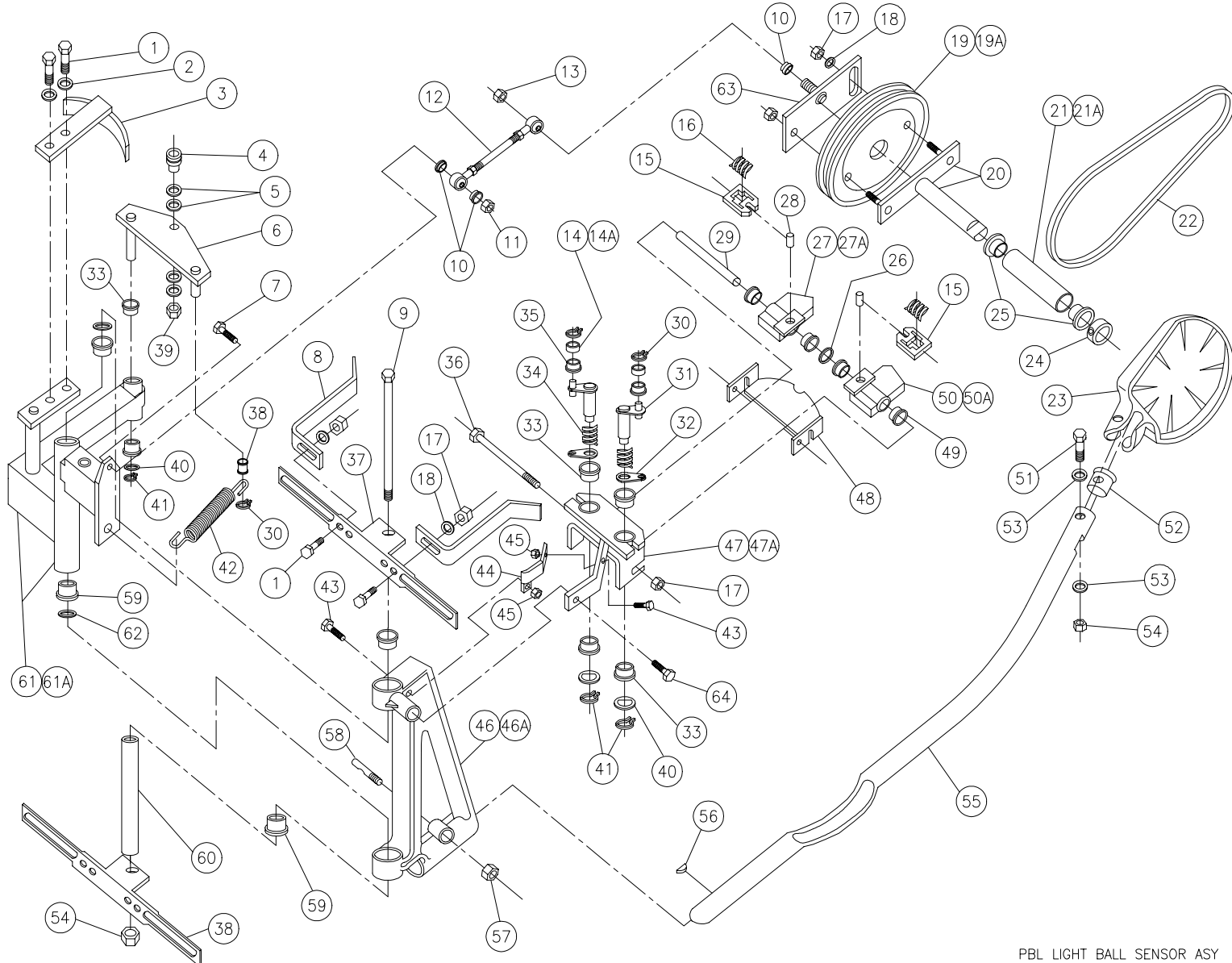


PBL LIGHT BALL SENSOR ASSEMBLY

ITEM	QTY	PART #	DESCRIPTION
1	4	809-857-165	SCREW, HEX, 5/16 - 18 X 1
2	2	000-022-869	WASHER
3	1	070-011-418	TRIP CAM
4	1	070-006-728	CAM FOLLOWER
5	4	949-100-002	WASHER, FLAT, 59/64 X 13/32 X 1/16
6	1	070-011-068	LINK WELDMENT
7	1	809-865-205	SCREW, HEX, 3/8 - 16 X 1¼
8	2	070-011-107	TRIP ARM (RESET CAM)
9	1	802-865-996	SCREW, HEX, 3/8 - 16 X 9½
10	3	000-029-611	WASHER, UNIBALL BEARING
11	1	840-065-002	NUT, FLEX LOCK, 3/8 -16, THIN
12	1	090-005-258	ROD ASSEMBLY
13	1	838-866-002	NUT, HEX LOCK, 3/8 - 24
14	2	070-011-096	ROLLER
14A	2	070-011-105	ROLLER ASSEMBLY (includes 14 & 35)
15	2	070-011-077	TRIP FINGER
16	2	722-971-522	COMPRESSION SPRING
17	4	844-057-002	NUT, STOVER LOCK, 5/16 - 18
18	3	948-761-112	WASHER, 11/16 X11/32 X 1/16
19	1	070-011-097	CRANK PULLEY
19A	1	070-011-178	RUDDER DRIVE CRANK ASSY (includes 13, 17, 18, 19, 20 & 63)
20	1	070-011-092	CRANK SHAFT WELDMENT
21	1	000-029-697	ADJUSTMENT TUBE
21A	1	000-029-696	ADJUSTMENT TUBE ASSY (includes 21 & 25)
22	1	070-011-148	V-BELT, PADDLE DRIVE, UPPER

ITEM	QTY	PART #	DESCRIPTION
23	1	070-011-146	PADDLE
24	2	000-021-423	COLLAR WITH SETSCREW
25	2	000-021-427	FLANGED BEARING, .629 X .878 X 1/8
26	1	000-027-264	SPACER
27	1	070-011-404	RUDDER CAM, R.H.
27A	1	070-011-406	RUDDER CAM ASSY, R.H. (incl. 27, 28 & 49)
28	2	913-448-120	SPRING PIN, ¼ X ¾
29	1	070-011-098	SLEEVE
30	3	919-005-200	RETAINING RING
31	2	070-011-626	TRIP ARM ASSEMBLY
32	2	070-011-273	TAB
33	6	900-208-091	FLANGED BEARING, .503 X .690 X 9/16
34	2	722-985-512	COMPRESSION SPRING
35	2	900-205-081	FLANGED BEARING, .315 X .44 X 1/2
36	1	809-857-880	SCREW, HEX, 5/16 - 18 X 5-1/2
37	2	090-007-276	BRACKET
38	1	070-011-040	RATCHET ROLLER
39	1	844-070-002	NUT, STOVER LOCK, 7/16 - 20
40	3	070-011-108	WASHER
41	3	919-005-500	RETAINING RING
42	1	000-026-031	SPRING
43	2	809-849-125	SCREW, HEX, ¼ - 20 x ¾
44	1	070-011-299	SENSOR BRACE
45	2	844-049-002	NUT, STOVER LOCK, ¼ - 20
46	1	070-011-067	RUDDER ARM SUPPORT
46A	1	070-011-066	RUDDER ARM SUPPORT ASSY (incl. 46 & 59)

PBL LIGHT BALL SENSOR ASSEMBLY (continued)



PBL LIGHT BALL SENSOR ASY



PBL LIGHT BALL SENSOR ASSEMBLY (continued)

ITEM	QTY	PART #	DESCRIPTION
47	1	070-011-100	CAM SENSOR WELDMENT
47A	1	070-011-110	CAM SENSOR ASSY (includes 33 & 47)
48	1	070-011-099	CAM
49	4	900-208-161	FLANGED BEARING, .503 X .875
50	1	070-011-405	RUDDER CAM, L.H.
50A	1	070-011-407	RUDDER CAM ASSY, L.H. (incl. 28, 49 & 50)
51	1	809-865-405	SCREW, HEX, 3/8 - 16 X 2½
52	1	070-011-121	PLUG
53	2	948-767-132	WASHER, FLAT, 13/16 X 13/32 X 1/16
54	1	844-065-002	NUT, FLEX LOCK, 3/8 - 16
55	1	070-011-122	RUDDER ARM
56	1	907-000-900	KEY
57	1	831-573-002	NUT, HEX, 1/2 - 13
58	1	000-024-616	CLAMP STUD
59	4	900-212-201	FLANGED BEARING, .753 X 1 X 1.25
60	1	000-024-615	SHAFT
61	1	070-011-079	RUDDER DRIVE WELDMENT
61A	1	070-011-080	RUDDER DRIVE ASSY (incl. 33, 59 & 61)
62	2	070-011-151	SPACER
63	1	070-011-225	CRANK ADJUSTMENT PLATE WELDMENT
64	1	809-865-165	SCREW, HEX, 3/8 - 16 X 1

ITEM	QTY	PART #	DESCRIPTION
------	-----	--------	-------------