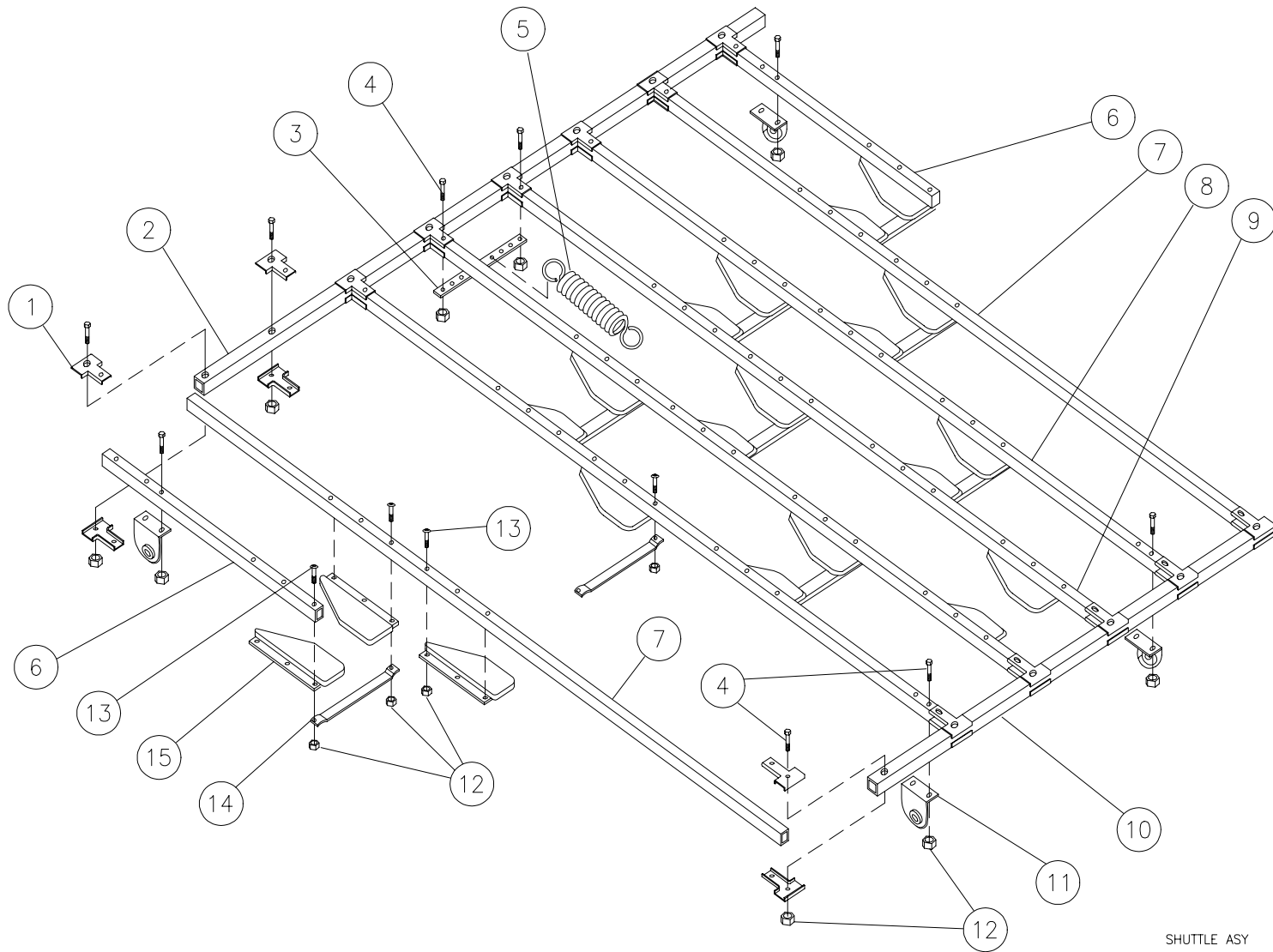


# SHUTTLE ASSEMBLY





## SHUTTLE ASSEMBLY

ITEM	QTY	PART #	DESCRIPTION
1	28	070-006-261	END CLAMP
2	1	070-006-253	CROSS TUBE, LONG
3	1	070-006-266	BIN SPRING STRAP
4	36	709-013-069	SCREW, HEX, M6 X 40 mm
5	1	070-006-447	SPRING, SHUTTLE ASSEMBLY
6	2	070-006-254	SIDE TUBE, SHORT
7	2	070-006-256	OUTSIDE TUBE
8	2	070-006-255	SIDE TUBE, LONG
9	2	070-006-257	CENTER TUBE
10	1	070-006-258	CROSS TUBE, SHORT
11	4	070-006-259	SHUTTLE ARM BRACKET
12	96	838-670-006	NUT, HEX, M6
13	60	709-013-068	SCREW, BUTTON HEAD M6 X 20 mm
14	9	070-006-268	STRAP
15	20	070-006-265	PIN HOLDER

ITEM	QTY	PART #	DESCRIPTION
------	-----	--------	-------------