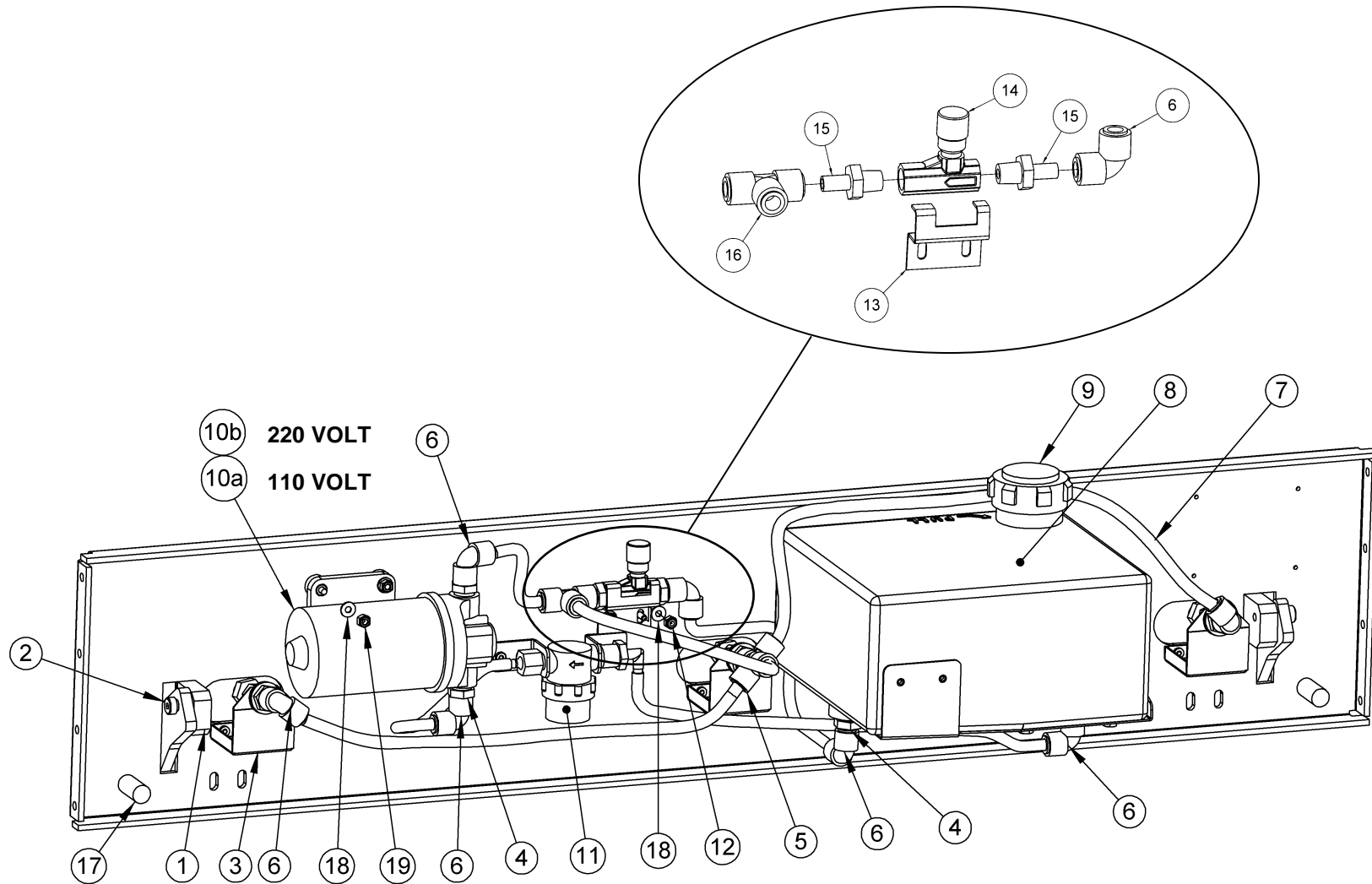


FRONT PLATE ASSEMBLY (REAR VIEW)



FRONT PLATE ASSEMBLY (REAR VIEW)

	PART NO.	DESCRIPTION	QTY
1	294-002-453	MOUNTING BRACKET, FRONT HANDLE	2
2	880-164-720	SHOULDER BOLT, 3/8 X 1/2	2
3	294-002-402	BRACKET, NOZZLE ASSEMBLY	3
4	294-115-072	STEM ADAPTER, 3/8 NPT X 3/8	4
5	294-115-076	CROSS UNION, QUICK CONNECT	1
6	294-115-073	ELBOW UNION, QUICK CONNECT	6
7	04-128	TUBE, TYGOTHANE (SPECIFY LENGTH IN FEET)	1
8	294-002-523*	CLEANER TANK AND BRACKET ASSEMBLY	1
9	294-115-092	CLEANER TANK CAP	1
10a	02-206	CLEANER PUMP, 110V	1
10b	294-115-287	CLEANER PUMP, 220V	1
11	294-115-673*	FILTER MOUNT ASSEMBLY	1
12	01-031	NUT, HEX, 10-32, NYLON LOCKING	4
13	294-115-635	BRACKET, FLOW CONTROL VALVE	1
14	294-115-636	FLOW CONTROL VALVE	1
15	294-115-071	STEM ADAPTER, 1/4 NPT X 3/8	2
16	294-115-074	TEE, UNION, QUICK CONNECT	1
17	A-8346	TRAY DIRECTION BLOCK	2
18	01-030	WASHER, #10 FLAT	8
19	838-740-002	NUT, #10-32, HEX, LOCK	4

* For more information, refer to the individual part drawing.