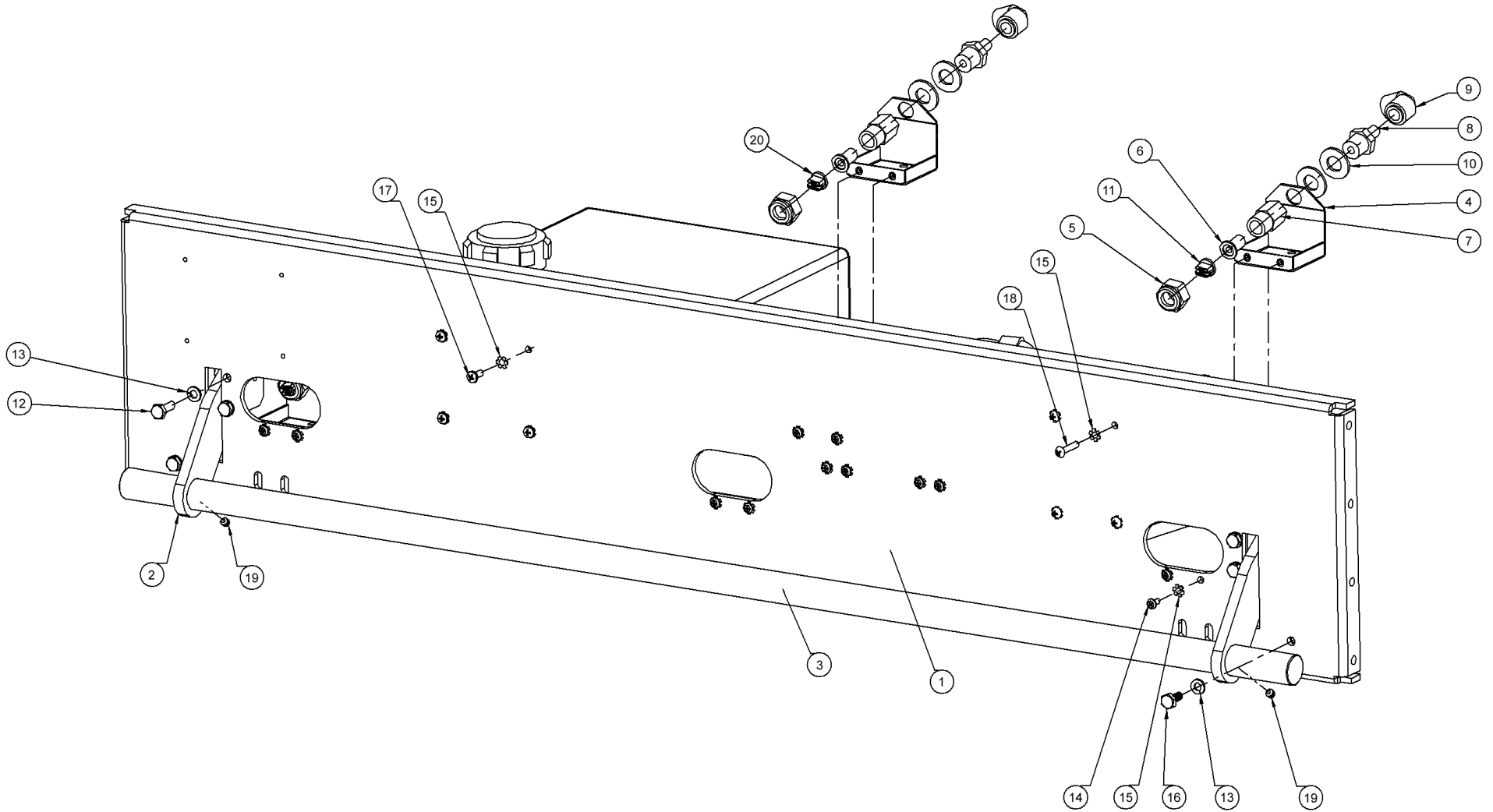


FRONT PLATE ASSEMBLY (FRONT VIEW)



FRONT PLATE ASSEMBLY (FRONT VIEW)

PART NO.	DESCRIPTION	QTY
1	294-002-405 FRONT PLATE	1
2	294-002-448 HANDLE HOLDER BRACKET	2
3	294-002-449 HANDLE FRONT	1
4	294-002-402 BRACKET NOZZLE ASSEMBLY	3
5	294-002-404 TIP RETAINER, UNIJET 1325	3
6	294-002-401 STRAINER CHECK VALVE	3
7	294-002-403 NOZZLE BODY	3
8	294-115-071 STEM ADAPTER, ¼ NPT x 3/8	3
9	294-115-073 ELBOW, UNION, QUICK CONNECT	5
10	948-975-172 WASHER 17/32 X 1 1/16	6
11	294-002-407 SPRAY NOZZLE, UNIJET 1501 (for use with left or right nozzle assembly only)	2
12	01-046 BOLT, 1/4-20 X 3/4, HEX HEAD	4
13	951-148-002 LOCK WASHER, SPLIT, 1/4	6
14	01-019 SCREW, #10-32 X 3/8	12
15	01-033 LOCK WASHER, #10 EXTERNAL TOOTH	20
16	01-044 BOLT, 1/4-20 X 5/8 HEX HEAD	2
17	01-021 SCREW, #10-32 X 1/2 PAN HEAD	4
18	01-024 SCREW, #10-32 X 1, PHILIPS, ROUND HEAD, ZINC	4
19	01-041 SET SCREW, 1/4-20 X 1/4 CUP POINT	2
20	294-002-406 SPRAY NOZZLE, UNIJET 8003 (for use with center nozzle assembly only)	1