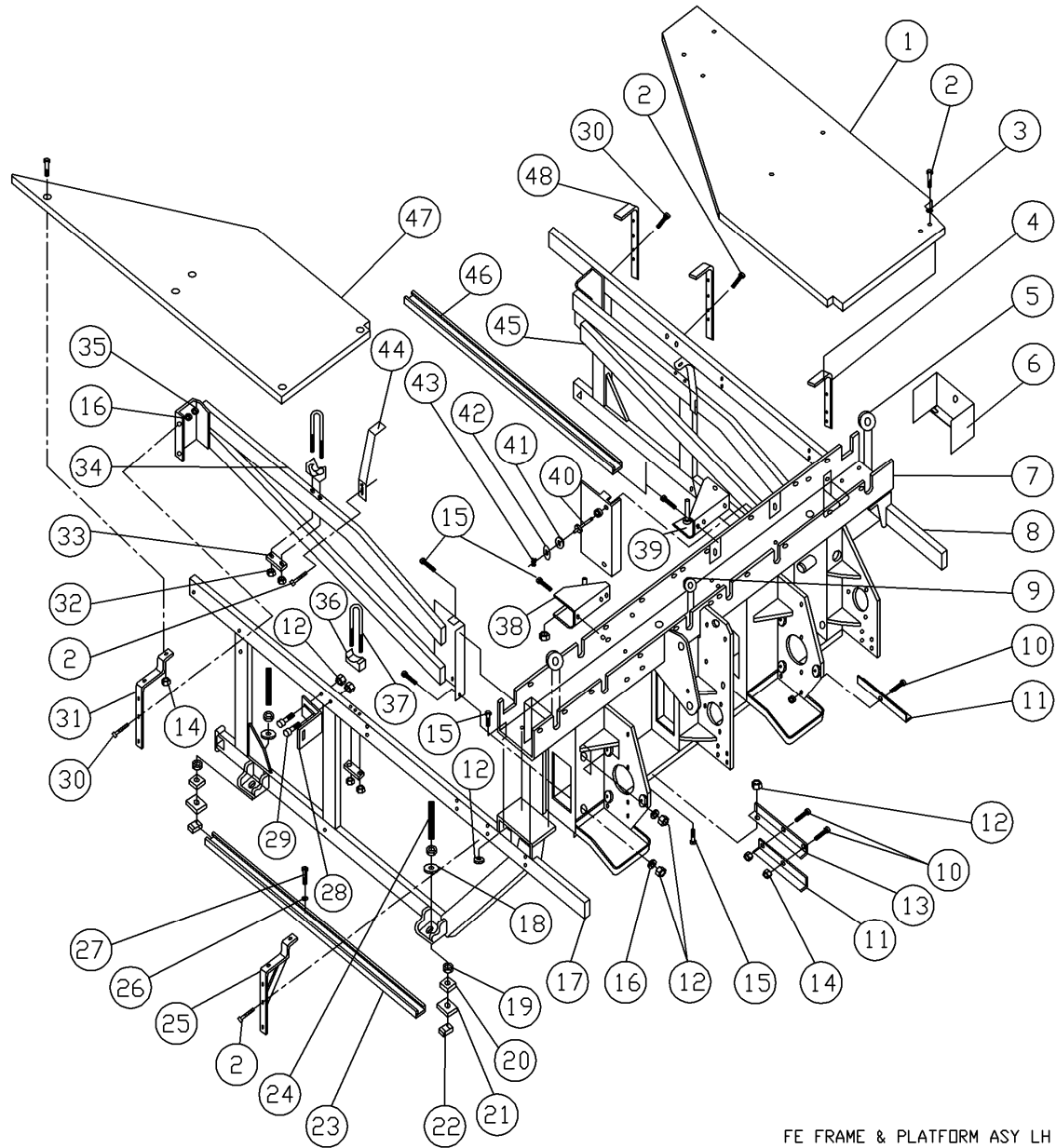


FRONT END FRAME & PLATFORM ASSEMBLY – EVEN MACHINE



FE FRAME & PLATFORM ASY LH



FRONT END FRAME & PLATFORM ASSEMBLY – EVEN MACHINE

ITEM	QTY	PART #	DESCRIPTION
1	1	070-006-426	PLATFORM, 10-PIN SIDE
2	20	809-849-285	SCREW, HEX, 1/4 -20 X 1-3/4
3	10	948-753-102	WASHER, FLAT, 5/8 X 9/32 X 1/16
4	2	070-001-817	PLATFORM ANGLE WELDMENT
5	2	250-001-046	GROMMET, LARGE
6	1	090-005-034	END PLATE
7	1	088-500-200	CROSSBEAM WELDMENT, WIDE DUCT
8	1	090-004-003	SIDE FRAME, 10-PIN SIDE
9	8	711-520-017	GROMMET, SMALL
10	4	809-849-125	SCREW, HEX, 1/4 -20 X 3/4
11	2	070-001-698	PIT LIGHT BRACKET
12	24	839-665-002	NUT, STOVER LOCK, 3/8 -16
13	1	070-001-596	ANGLE BRACKET
14	14	844-049-002	NUT, STOVER LOCK, 1/4 - 20
15	16	809-865-165	SCREW, HEX, 3/8 - 16 X 1
16	25	948-767-132	WASHER, FLAT, 13/16 X 13/32 X 1/16
17	1	090-004-006	SIDE FRAME, 7-PIN SIDE
18	4	000-021-787	WASHER, 9/16 X 1-5/8 X 1/4
19	8	835-573-002	NUT, HEX JAM, 1/2 - 13
20	4	070-007-509	ELEVATING NUT
21	4	000-021-786	FRAME ADJUSTMENT PLATE
22	4	853-500-001	UNISTRUT NUT
23	1	070-007-844	UNISTRUT, SHORT
24	4	070-007-510	ELEVATING SETSCREW
25	1	070-001-819	PLATFORM SUPPORT WELDMENT
26	8	948-761-112	WASHER, FLAT, 11/16 X 11/32 X 1/16

ITEM	QTY	PART #	DESCRIPTION
27	8	810-556-320	SCREW, HEX LAG, 5/16 X 2
28	2	070-004-654	TRACK SUPPORT BRACKET
29	4	809-865-285	SCREW, HEX, 3/8 - 16 X 1-3/4
30	4	809-865-325	SCREW, HEX, 3/8 - 16 X 2
31	1	070-006-414	PLATFORM SUPPORT BRACKET
32	8	844-057-002	NUT, STOVER LOCK, 5/16 - 18
33	4	070-008-126	CLAMP BAR
34	1	090-005-646	INNER SIDE BRACE, 7-PIN SIDE
35	4	840-065-002	NUT, FLEX LOCK, THIN, 3/8 - 16
36	4	000-021-528	SADDLE
37	4	804-557-731	U-BOLT, SWEEP MOUNTING
38	1	070-006-413	BRACKET WELDMENT, BIN ASSEMBLY, 7-PIN SIDE
39	1	070-006-411	BRACKET WELDMENT, BIN ASSEMBLY, 10-PIN SIDE
40	4	090-002-028	PIN SPRING ROLLER
41	4	090-003-795	COUNTERBALANCE SPRING ROLLER
42	4	945-867-242	WASHER, 13/32 X 1-1/2
43	4	963-400-002	X-WASHER
44	3	070-006-490	PLATFORM SUPPORT BRACKET
45	1	090-005-647	INNER SIDE BRACE, 10-PIN SIDE
46	1	070-007-843	UNISTRUT, LONG
47	1	070-006-425	PLATFORM, 7-PIN SIDE
48	1	070-006-405	ANGLE WELDMENT