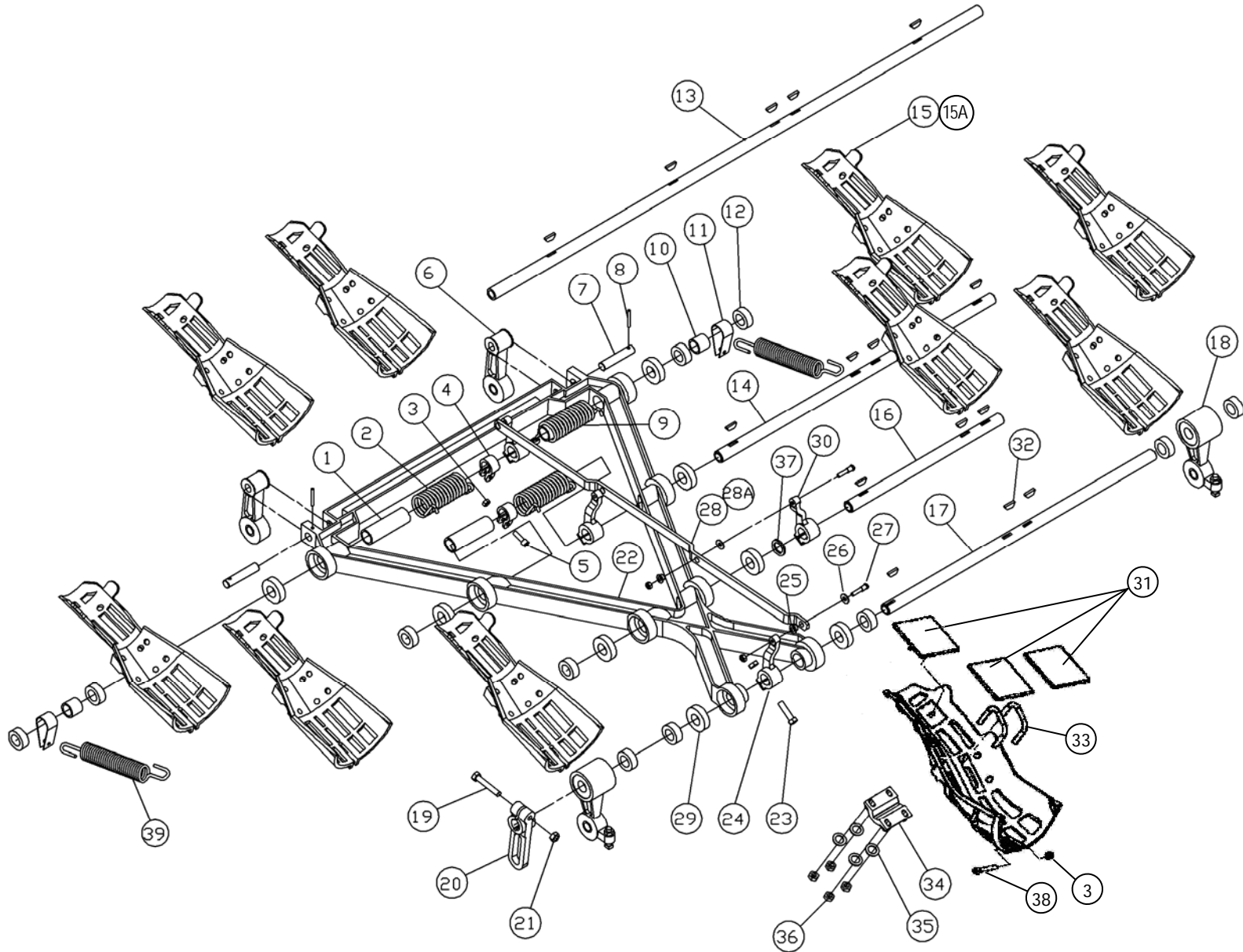


YOKE & SPOTTING CUP ASSEMBLY





YOKE & SPOTTING CUP ASSEMBLY

ITEM	QTY	PART #	DESCRIPTION	ITEM	QTY	PART #	DESCRIPTION
1	3	070-002-719	SPRING SLEEVE	27	4	070-002-723	PIN
2	2	070-002-688	SPRING, R.H. WOUND, 7-PIN SIDE	28	1	070-002-611	LINK
3	17	844-049-002	NUT, STOVER LOCK, 1/4 - 20	28A	1	070-002-612	LINK ASSEMBLY (includes: 25 & 28)
4	3	090-004-033	CLAMP	29	8	190-001-490	BALL BEARING, .875 X 1.875 X .5
5	3	809-849-165	SCREW, HEX, 1/4 - 20 X 1	30	2	070-002-603	OUTER LEVER
6	2	090-005-548	REAR LEG ASSEMBLY	31	30	070-002-784	SPOTTING CUP LINER
7	2	070-002-609	PIN	32	15	907-000-600	KEY
8	2	913-437-240	SPRING PIN, 3/16 X 1-1/2	33	20	070-002-787	U-BOLT
9	1	070-002-689	SPRING, L.H. WOUND, 10-PIN SIDE	34	10	070-002-788	CAP
10	2	900-114-161	BEARING, 7/8 X 1-1/8 X 1	35	40	948-761-112	WASHER, FLAT, 11/32 X 1-1/16 X 1/16
11	2	090-005-577	SPRING HOOK	36	40	844-057-002	NUT, STOVER LOCK, 5/16 - 18
12	12	000-025-549	LOCK COLLAR WITH SETSCREW	37	1	070-002-620	SPACER
13	1	090-005-578	SHAFT #4	38	10	810-249-240	SCREW, SOCKET HEAD, 1/4 - 20 X1-1/2
14	1	070-002-617	SHAFT #3	39	2	000-026-032	SPRING
15	10	070-002-809	SPOTTING CUP				
15A	10	070-002-808	SPOTTING CUP ASSY (includes 3, 15, 31, 33 & 38)				
16	1	070-002-616	SHAFT #2				
17	1	090-005-553	SHAFT #1				
18	2	090-005-545	FRONT LEG ASSEMBLY				
19	1	809-865-365	SCREW, HEX, 3/8 - 16 X 1-1/2				
20	1	090-005-554	ARM ACTUATOR				
21	5	839-665-002	NUT, FLEX LOCK, 3/8 - 16				
22	1	070-002-683	YOKE				
23	4	809-865-245	SCREW, HEX, 3/8 - 16 X 1-1/2				
24	2	070-002-602	INNER LEVER				
25	4	900-205-053	FLANGED BEARING, .315 x .44 x 5/16				
26	4	701-310-036	THRUST BEARING				