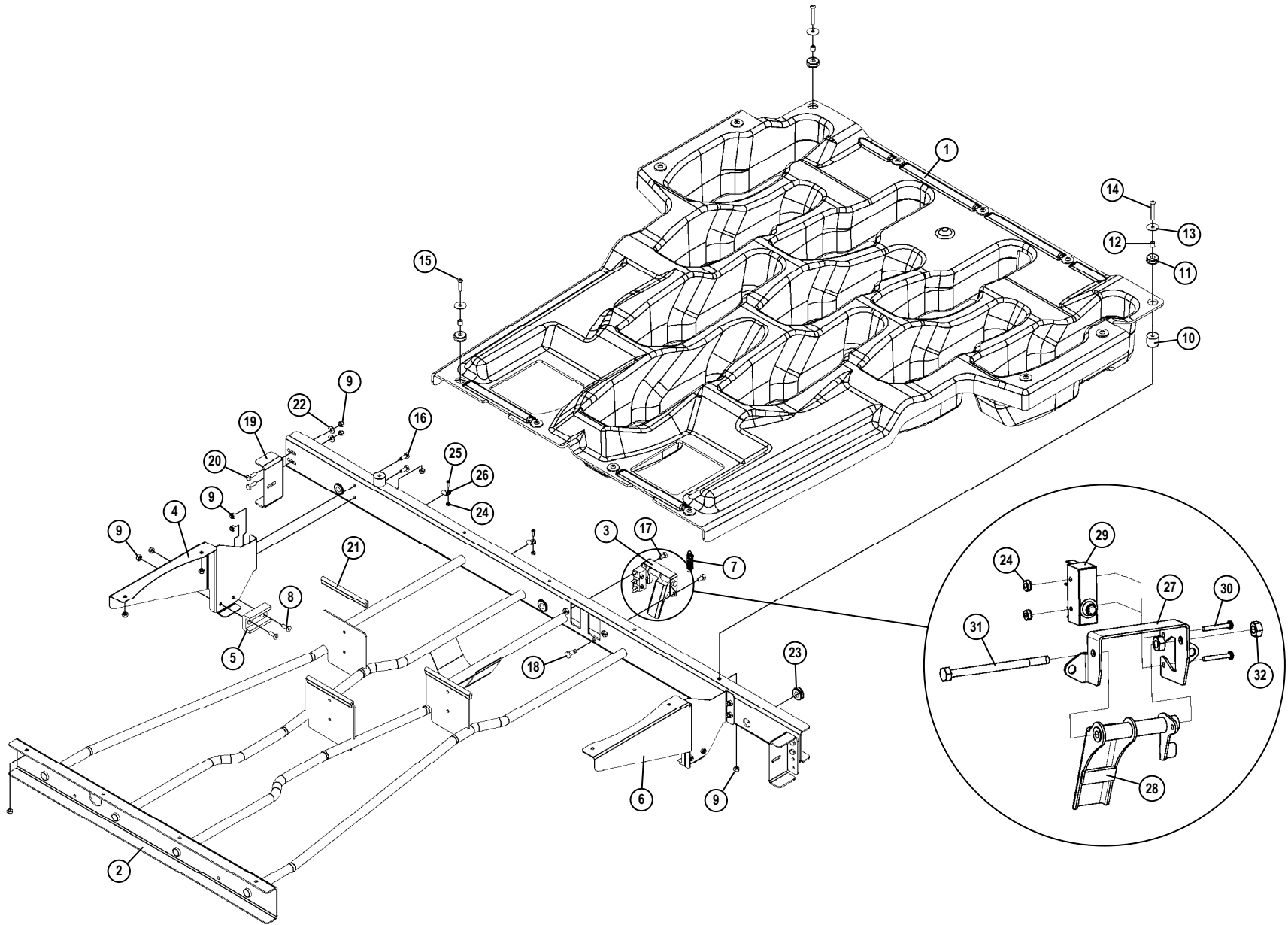


DURABIN II ASSEMBLY





DURABIN II ASSEMBLY

ITEM	QTY	PART #	DESCRIPTION
1	1	088-001-600	DURABIN II
2	1	088-001-601	DURABIN II FRAME WELDMENT
3	1	088-001-602	DURABIN II BIN SWITCH ASSEMBLY
4	1	088-001-607	DURABIN II SHUTTLE SUPPORT, 7-SIDE
5	2	088-001-603	SHUTTLE REAR SUPPORT GUIDE
6	1	088-001-610	DURABIN II SHUTTLE SUPPORT, 10-SIDE
7	1	088-001-200	DURABIN SWITCH SPRING
8	4	808-849-120	SCREW, SOCKET FLAT HEAD, 1/4-20X3/4
9	25	839-549-002	NUT, HEX, 1/4-20
10	2	088-001-605	HAT REPLACEMENT SPACER
11	13	711-512-040	GROMMET, 3/8X7/8X1/4
12	13	088-001-604	SPACER, .25X.375X.375, STEEL
13	13	070-007-192	WASHER, 1/4X1.00X.05
14	2	808-549-285	SCREW, BUTTON HEAD, 1/4-20X1-3/4
15	11	808-549-160	SCREW, BUTTON HEAD, 1/4-20X1
16	4	809-849-100	SCREW, HEX, 1/4-20X5/8
17	2	809-849-085	SCREW, HEX, 1/4-20X1/2, GRADE 8
18	1	070-006-142	BUMPER
19	2	070-006-371	SUPPORT BRACKET
20	4	809-849-125	SCREW, HEX, 1/4-20X3/4
21	3	088-001-264	BIN FRAME EDGE TRIM
22	4	948-753-102	WASHER, A-N FLAT, 1/4
23	3	711-516-020	GROMMET, 1-1/16X1/2X3/8
24	4	843-127-002	NUT, KEPS, 6-32
25	2	818-227-082	SCREW, PHILIPS PAN HEAD, 6-32X1/2
26	2	744-107-013	CLAMP, NYLON, 3/16
27	1	088-001-606	DURABIN II SWITCH BRACKET

ITEM	QTY	PART #	DESCRIPTION
28	1	088-001-608	DURABIN II SWITCH ACTUATOR
29	1	000-026-043	SWITCH
30	2	818-227-162	SCREW, PHILIPS PAN HD, 6-32X1, SEMS
31	1	809-849-605	SCREW, HEX, 1/4-20X3-3/4
32	2	834-549-002	NUT, HEX, 1/4-20