

DISTRIBUTOR ASS'Y. (SH. 1)

Ref. Dwg. 070-006-150

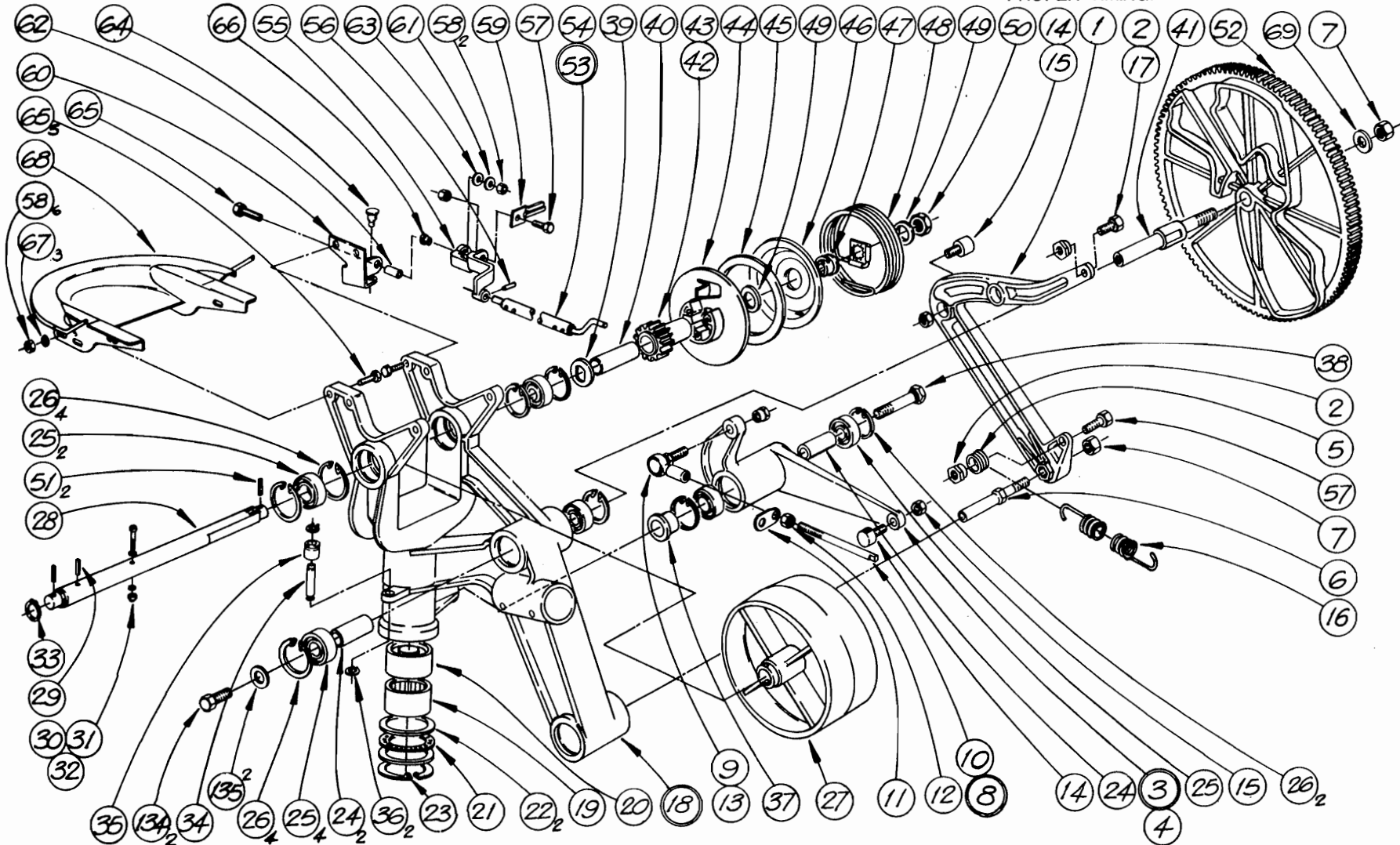
ITEM	PART NUMBER	DESCRIPTION	ITEM	PART NUMBER	DESCRIPTION
1	070 006 051	Arm	38	070 006 048	Bolt, Special
2	000 022 173	Nut, Special	39	070 007 376	Washer, Thrust
3	070 007 119	Drive Arm Ass'y. (Lateral)	40	070 006 676	Sleeve
4	070 006 052	Drive Arm	41	070 006 061	Shaft, Cam Support
5	070 006 111	Spring Post Sleeve	42	070 006 679	Bushing, Pinion
6	070 006 049	Shaft Arm	43	610 704 005	Pinion & Gear Sleeve Ass'y.
7	844 073 002	Nut Lock, Stover 1/2-13	44	610 704 006	Kit, Clutch Plate Ass'y.
8	070 007 137	Rod Link Ass'y.	45	070 006 126	Friction Disc
9	070 006 066	Rod End, Female	46	070 006 130	Clutch Plate, Drive
10	070 006 067	Rod, Safety Link	47	070 006 125	Worm
11	070 006 068	Spring Support	48	070 006 128	Spring Ass'y.
12	831 565 002	Nut, Hex-Reg. 3/8-16	49	070 006 121	Washer
13	070 006 069	Nut, Special	50	070 006 124	Nut, Special
14	070 006 071	Cam Follower	51	913 437 140	Roll Pin (ESNA) 3/16" x 7/8" LG
15	844 050 002	Nut, Lock-Stover 1/4-28	52	070 006 149	Cam Index
16	070 006 034	Spring, Linear	53	070 006 668	Trip Stop Rod & Support Casting Ass'y.
17	808 849 100	Screw, Sofl. 1/4-20 x 5/8" LG.	54	070 006 663	Trip Stop Rod Ass'y.
18	070 006 136	Main Casting & Bearing Ass'y.	55	070 006 667	Trip Support Casting Ass'y.
19	070 006 076	Needle Bearing, Open End	56	913 415 090	Roll Pin (0.94 x 9/16" LG.) AC3.
20	070 006 075	Needle Bearing, Closed End	57	809 849 125	Screw, Hex Hd. Cap 1/4-20 x 3/4" LG.
21	070 006 074	Needle Thrust Bearing	58	844 049 002	Lock Nut, Stover 1/4-20
22	070 006 073	Thrust Washer	59	070 006 691	Stop Blade
23	919 004 200	Ring, Tru-Arc (Internal)	59a	070 006 083	Stop Blade (Used W/Old Clutch Plate Assy. - 070 006 062 Only)
24	070 006 064	Spacer Bearing	60	070 006 084	Trip Stop Support Brkt.
25	000 024 679	Bearing	61	000 026 865	Washer
26	919 000 600	Ring, Tru-Arc (Internal)	62	070 006 685	Pivot - (19/32 LG)
27	070 006 666	Pulley, Drive	62a	070 006 087	See Page 75
28	070 006 077	Shaft	63	070 007 651	Washer, Nylon
29	914 037 206	Spirol Pin (187-1250L-B-R)	64	070 006 142	Bumper
30	810 239 240	Screw, Soc. Hd. Cap. 10-24 X 1 1/2" LG.	65	809 849 205	Screw, Hex Hd. Cap 1/4-20 x 1 1/4 LG.
31	840 039 002	Nut, FlexLoc 10-24	66	701 712 097	Press Bearing - Spyralign (FSB 375)
32	948 745 082	Washer 7/32" I.D. x 1/2" O.D. x 3/64 THK.	67	948 753 102	Washer, 5/8 O.D. x 9/32 I.D. x 0.62 THK.
33	919 005 600	Ring, Tru-Arc (External)	68	070 006 144	Orienter Pan Ass'y.
34	070 006 082	Pin, Spring Post	69	948 975 172	Washer, 1 1/16 O.D. x 17/32 I.D. x 3/32 THK.
35	000 026 081	Spring Post Sleeve	134	809 857 080	Screw, Hx. Hd. Cap. 5/16-18 x 1/2 AC3
36	919 005 300	Ring, Tru-Arc External	135	948 761 112	Washer, Plain 1 1/16" O.D. x 1 1/32 I.D. x 1/16" THK.
37	070 006 065	Clamp Race			

DISTRIBUTOR ASS'Y. (Sheet 1).

Ref. Dwg. 82-070 006 150

NOTES:

1. ADJUST TORQUE NUT (IT. 50) TO 250 LBS. IN.
2. ASSEMBLE MARKED TOOTH OF PINION (IT. 52) INTO MARKED TOOTH SPACE OF CAM GEAR FOR PROPER TIMING.



DISTRIBUTOR ASS'Y. (SH.2) Ref. Drawing 82-70 006 150

72

ITEM	PART NUMBER	DESCRIPTION	ITEM	PART NUMBER	DESCRIPTION
5	070-006-111	Spring Post Sleeve	105	070-011-173	Ball Joint Ass'y. (9/16)
57	809-849-125	Screw, Hex Hd. Cap 1/4-20x3/4" LG.	106	070-006-013	Pin Guide
64	070-006-142	Bumper	107	806-249-060	Set Screw, Sq. Hd. Cup Pt. 1/4-20 x 3/8 LG.
66	844-049-002	Locknut, Stover 1/4-20	108	070-006-055	Carriage - Front
70	070-006-757	Belt	109	070-006-137	Belt Guard
71	070-006-036	Belt Lacing	110	913-437-140	Pin (ESNA) 3/16x7/8" LG.
72	070-006-037	Belt Pin	111	835-549-002	Nut, Hex, Jam - 1/4-20
73	070-006-683	Tube Middle-Ass'y.(7 7/64" Long)	112	840-040-002	Nut, FlexLoc Thin #10-32
73a	070-006-022	See Page 75	113	701-710-098	Spyralign - Press Bearing
74	900-106-081	Bearing	113a	900-206-091	Oilite Bearing (Used on Old Carriage Supp't. Ass'y.)
75	070-006-661	Trip Rocker Arm Wldm't.	114	070-006-106	Tracking Brkt.
75a	070-006-028	See Page 75	115	070-006-109	Link
76	070-001-857	Roller	116	070-006-107	Tube
77	919-005-000	Retaining Ring	117	809-849-605	Screw Hex Hd. Cap 1/4-20 x 3 3/4 LG.
78	070-011-170	Trip Cable Ass'y.	118	070-006-120	Carriage Support Tube
79	070-011-171	Cable	119	913-464-280	Roll Pin (ESNA) 3/8 x 1 3/4" LG.
80	070-006-009	Belt Runner Support Ass'y.	120	070-006-105	Tube Ass'y.
81	810-239-160	Screw, Soc. Hd. Cap 10-24x1" LG.	121	070-006-108	Spacer
82	840-039-002	Nut, FlexLoc 21 FK, 10-24	122	070-006-118	Bearing, Grooved - Excentric
83	070-006-011	Pulley Ass'y.	123	809-849-162	Screw, Hex Hd. Cap 1/4-20 x 1" LG.
84	000-024-679	Bearing	*124	701-849-124	Bearing Thrd'd Bore Concentric
85	070-006-015	Trip Arm Ass'y. (R.H.)	125	070-006-117	Bearing, Grooved - Concentric
86	070-006-688	Carriage Support, Casting Ass'y.	126	000-026-031	Spring, Belt Tightener
87	070-006-116	Clamp Stud	127	070-006-042	Belt Runner, Rear
88	834-549-002	Nut, Hex (Reg.) 1/4-20	128	070-006-103	Support Guide L.H.
89	070-006-021	Tube Ass'y.- Front	129	070-006-104	Support Guide R.H.
90			130	070-006-139	Spacer, Inner
91	070-006-016	Trip Arm Ass'y. (L.H.)	131	070-006-140	Spacer, Outer
92	070-011-172	Ball Joint Ass'y. (7/16")	132	809-849-885	Screw, Hex Hd. Cap 1/4-20x5 1/2" LG.
93	070-004-176	Bearing (See Items 136, 137 & 138 for Replcm't.	133	808-549-200	Screw, Soc. Hd. Button 1/4-20 x 1 1/4" LG.
94	070-006-014	Shaft	136	813-540-082	Screw, Phil. Hd. Truss 10-32 x 1/2" LG. (Use W/IT 138)
95	907-000-100	Key, Hi-Pro HP403	137	957-100-002	Washer, Star #1110-00 (Use W/IT. 138)
96	070-006-659	Shaft	138	000-026-251	Bearing, Field Rpl. For Item 93
97	807-249-160	Set Screw, Soc. Hd. Cup Pt. 1/4-20x1"			
98	000-022-173	Nut, Special			
99	070-006-029	Connecting Link			
100	070-006-672	Carriage, Rear			
101	070-006-004	Tube			
102	070-006-035	Spring			
103	070-006-019	Collar			
104	919-006-800	Ring, Retaining - Tru Arc 5115-37			

* NOTE: Roller must be all steel bearing on installations with MAGICSCORE.

DISTRIBUTOR ASS'Y. (Sheet 2).

Ref. Dwg. 82-070 006 150

