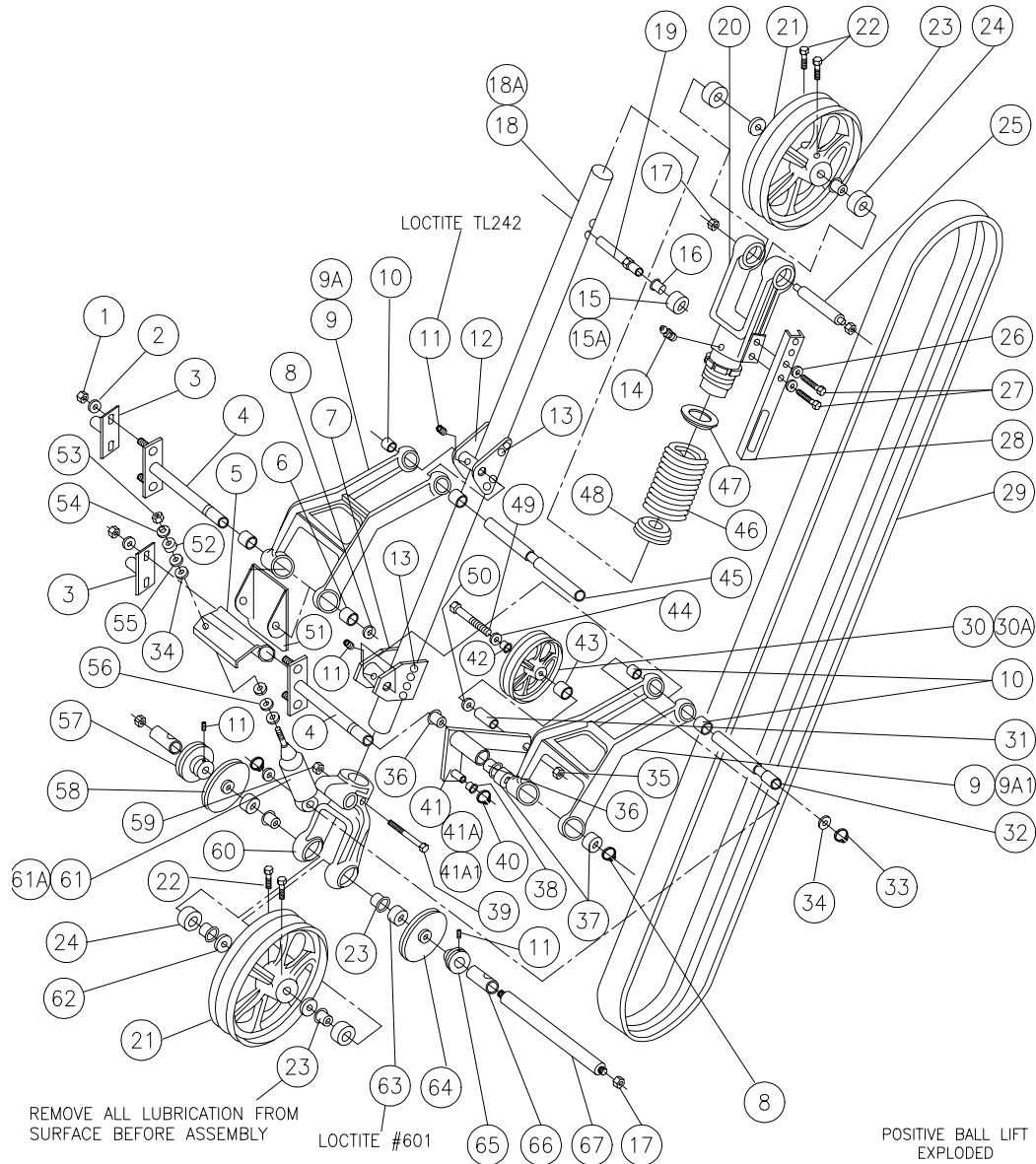


POSITIVE BALL LIFT (PBL) – EXPLODED VIEW





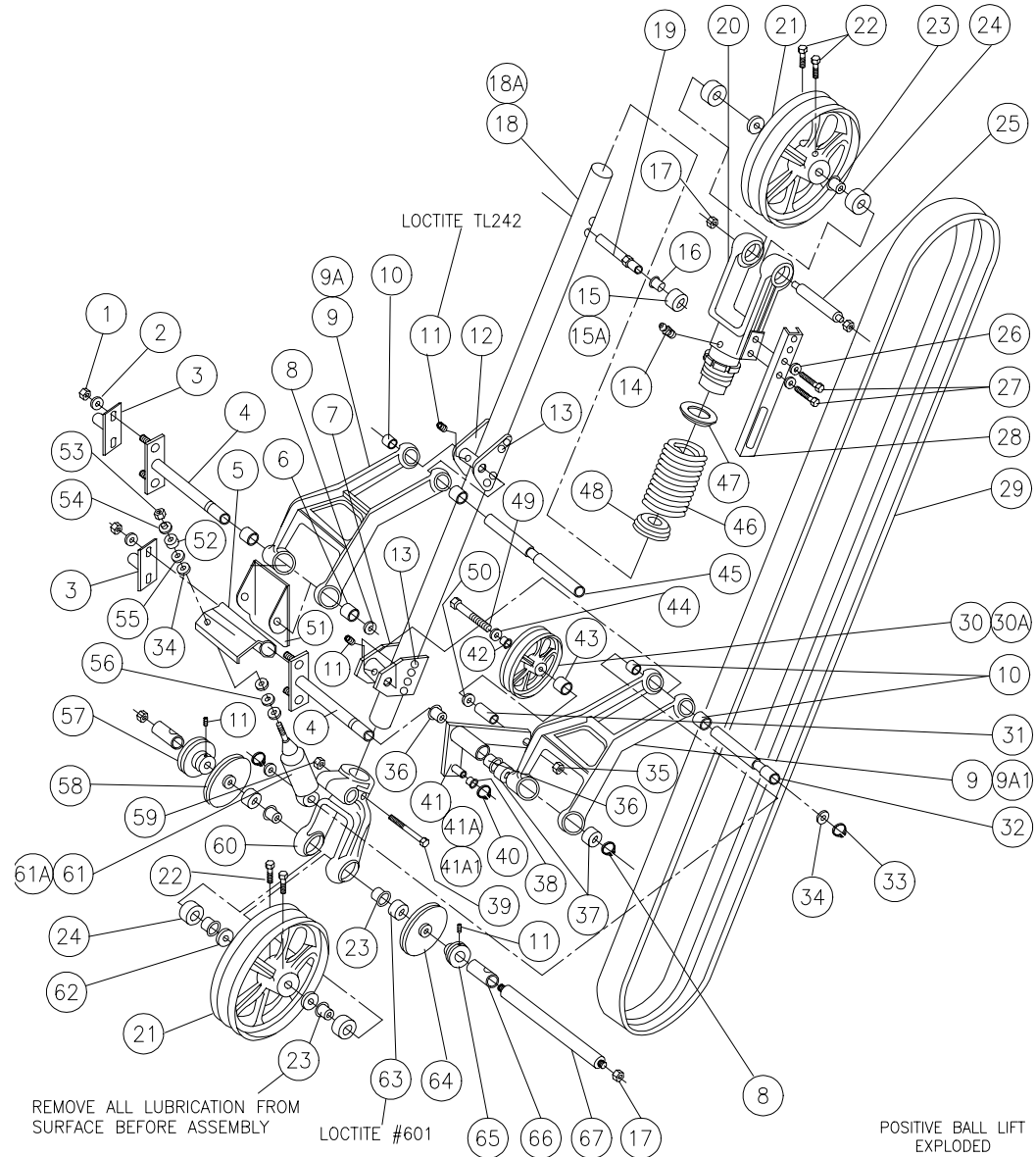
POSITIVE BALL LIFT (PBL) – EXPLODED VIEW

ITEM	QTY	PART #	DESCRIPTION
1	4	840-057-002	NUT, STOVER LOCK, 5/16
2	4	948-761-112	WASHER, FLAT, 11/32 X 11/16 X 1/16
*3	2	070-006-320	SHAFT ASSY. ADJ. 9 ½" - 11" SPACING
	2	070-006-329	SHAFT ASSY ADJ. 11" - "12-5/8" SPACING
	2	070-006-333	SHAFT ASSY. ADJ. 12-5/8" - 14" SPACING
*4	2	070-005-325	SHAFT ASSY. FXD. 9 ½" - 11" SPACING
	2	070-006-328	SHAFT ASSY. FXD. 11" - "12-5/8" SPACING
	2	070-006-330	SHAFT ASSY. FXD. 12-5/8" - 14" SPACING
5	1	070-011-289	SHOCK ABSORBER BRACKET
6	2	900-112-203	SLEEVE BEARING, .753 X 1-1/4
7	1	070-011-002	LOWER SUPPORT
8	2	919-005-800	RETAINING RING
9	2	000-024-653	LINK
9A	1	000-024-720	LINK ASSY, UPPER (includes 6, 9, 10, & 51)
9A1	1	000-024-651	LINK ASSY, LOWER (includes: 9, 10 & 37)
10	4	900-110-121	SLEEVE BEARING, .628 X 3/4
11	4	807-265-060	SETSCREW, 3/8 - 16 X 3/8
12	1	000-024-606	UPPER SUPPORT
13	16	937-000-000	RIVET, STEEL, 1/4 X 11/32
14	1	710-501-007	GREASE FITTING
15	1	000-024-647	ROLLER
15A	1	000-024-650	ROLLER ASSEMBLY (includes 15 & 16)
16	1	900-206-081	FLANGED BEARING, .378 X .688 X 1/2
17	4	856-070-002	NUT, FLANGED, 7/16 - 20
18	1	000-024-607	TUBE
18A	1	070-011-004	TUBE & SUPPORT ASSY (incl. 7, 12, 13, & 18)
19	1	000-024-648	PIVOT PIN

ITEM	QTY	PART #	DESCRIPTION
20	1	070-001-995	UPPER YOKE w/NUT
21	2	000-024-661	PULLEY
22	4	806-265-160	SETSCREW, 3/8 - 16 X 1
23	4	070-006-748	SPACER
24	4	070-006-699	BALL BEARING
25	1	070-006-747	UPPER SHAFT
26	4	951-164-002	WASHER, SPLIT LOCK, 3/8
27	2	809-865-165	SCREW, HEX, 3/8 - 16 X 1
28	1	000-029-613	RAIL
29	1	090-002-450	BELT, V-GUIDE FLAT, 2 INCHES WIDE
30	1	000-022-071	IDLER PULLEY
30A	1	000-021-408	IDLER PULLEY ASSY (includes 30 & 43)
31	1	070-008-218	SPACER, LONG
32	1	000-029-660	SHAFT
33	2	919-005-600	RETAINING RING
34	2	948-983-212	WASHER, FLAT, 1-5/16 X 21/32 X .093
35	1	839-549-002	NUT, FLEX LOCK, ¼ - 20
36	2	900-212-161	FLANGED BEARING, .753 X 1.003 X 1
37	2	900-112-161	SLEEVE BEARING, .753 X 1
38	1	070-011-040	RATCHET ROLLER
39	1	809-865-445	SCREW, HEX, 3/8 - 16 X 2¾
40	1	919-005-200	RETAINING RING
41	1	070-008-215	BELT TIGHTENER WELDMENT
41A	1	070-011-041	BELT TIGHTENER WELDMENT ASSEMBLY (includes 36 & 41)
41A1	1	070-011-042	BELT TIGHTENER ASSEMBLY (includes 30A, 31, 35, 38, 40, 41A, 42, 44, 49, & 50)

* Items 3 & 4 vary in length according to the space between the right and left pinspotters.

POSITIVE BALL LIFT (PBL) – EXPLODED VIEW (continued)





POSITIVE BALL LIFT (PBL) – EXPLODED VIEW (continued)

ITEM	QTY	PART #	DESCRIPTION
42	1	070-008-217	SHORT SPACER
43	1	900-208-161	FLANGED BEARING, .503 x .875 x 1
44	1	146-005-277	WASHER, COUNTERSUNK, 9/32 x 7/8 x 1/8
45	1	000-028-737	SHAFT
46	1	000-024-603	SPRING
47	1	000-024-608	UPPER RETAINER
48	1	000-024-605	LOWER RETAINER
49	1	808-849-565	SCREW, FLAT HEAD, 1/4 - 20 X 3-1/2
50	1	070-007-192	WASHER
51	1	000-024-716	SPRING HOLDER
52	2	000-027-996	RUBBER CUSHION
53	1	831-566-002	NUT, HEX, 3/8 - 24
54	2	000-027-998	RETAINER
55	2	000-028-057	RETAINER
56	2	070-008-212	SPACER
57	1	070-008-211	SHEAVE
58	1	000-024-811	PULLEY ASSEMBLY, R.H.
59	1	839-665-002	NUT, FLEX LOCK, 3/8 - 16
60	1	000-024-659	LOWER YOKE
61	1	000-029-661	SHOCK ABSORBER
61A	1	070-011-323	SHOCK ABSORBER ASSEMBLY (includes 5, 32, 33, 34, 52, 53, 54, 55, 56, & 61)
62	6	000-027-642	WASHER
63	2	070-007-291	CLUTCH BEARING
64	1	000-024-812	PULLEY ASSEMBLY, L.H.
65	1	070-008-210	SHEAVE

ITEM	QTY	PART #	DESCRIPTION
66	2	090-003-401	CLUTCH RACE, LONG
67	1	070-011-796	LOWER SHAFT
N/A		700-107-170	LOCTITE #601 (applied to item 63)
N/A		700-107-146	ADHESIVE, LOCTITE TL242 (apply to item 11)