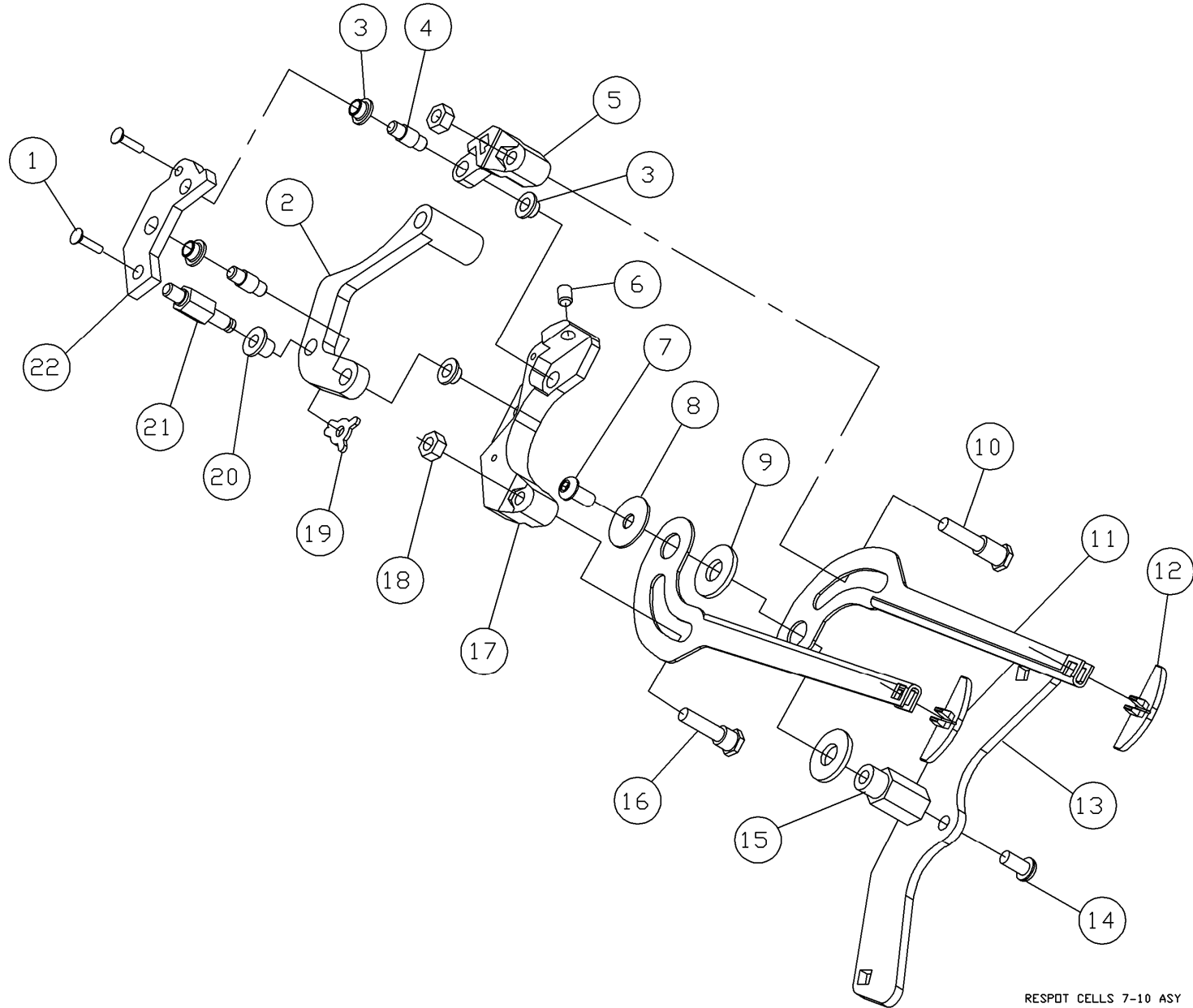


RESPOT CELL ASSEMBLY, CELLS 7 THROUGH 10



RESPOT CELLS 7-10 ASY



RESPOT CELL ASSEMBLY, CELLS 7 THROUGH 10

ITEM	QTY	PART #	DESCRIPTION	ITEM	QTY	PART #	DESCRIPTION
1	2	070-002-750	SCREW, FLAT HEAD				
2	1	070-002-651	RESPOT LEVER				
3	4	070-002-630	FLANGED BEARING, .252 X .315 X .218				
4	2	070-002-645	LEVER ASSEMBLY SHAFT				
5	1	090-004-113	RESPOT YOKE ARM				
6	1	807-650-050	SETSCREW, 1/4 - 28 X 5/16				
7	1	808-549-080	SCREW, BUTTON HEAD CAP, 1/4 - 20 X 1/2				
8	1	070-007-192	WASHER				
9	2	948-975-172	WASHER, FLAT, 1/2				
10	1	090-005-640	STUD, LONG				
11	2	090-004-119	RESPOT FINGER				
12	2	090-005-617	FINGER INSERT				
13	1	090-005-632	FINGER PIVOT WING				
14	1	809-149-100	SCREW, BUTTON HD w/PATCH, 1/4 - 20 X 5/8				
15	1	090-005-522	RESPOT FINGER BUSHING				
16	1	070-007-195	STUD, SHORT				
17	1	090-004-118	RESPOT YOKE				
18	2	844-049-002	NUT, STOVER LOCK, 1/4 - 20				
19	1	963-200-002	X-WASHER				
20	1	070-002-653	FLANGED BEARING, .252 X .315 X .38				
21	1	090-005-571	PIN, 8-9-10 LINKS				
22	1	070-002-695	YOKE PLATE				